

Central Hokkaido

Sapporo
Otaru
Noboribetsu
Toya



01 Odori Park (Sapporo)

- Early to mid May / Cherry blossom
 - Mid to late May / Sapporo Lilac Festival
 - Late July to mid August / Sapporo Beer Garden
 - Early to late Sep / Sapporo Autumn Fest
 - Late Nov until Dec 25 / German Christmas Market in Sapporo
 - Late Nov to mid March / Sapporo White Illumination
 - Early to mid Feb / Sapporo Snow Festival
- From JR Sapporo Station: Take subway and get off at "Odori" (2 min ride and 5 min walk) or 15 min walk

01 JR Tower Observatory T38 (Sapporo)

- All year round / Night view
- Directly connected from JR Sapporo Station



H 41 Toyoko Hot Springs



- Late April until the end of Oct / Lake Toya long-run fireworks nights
- From JR Toya Station: Take a bus and get off at "Toyoko Onsen" (20 min ride)

A 16 Alpen SNOWLAND BIBAI

- Early Dec to early March / Snow activities
- From JR Bibai Station: Shuttle bus



01 Hokkaido University (Sapporo)



- Late Oct to early Nov / Ginkgo Avenue
- From JR Sapporo Station: Take subway and get off at "Kita juni jo" (2 min ride and 5 min walk) or 15 min walk



特急カムイ All seats reserved
Ltd.Exp.Kamui

01 Sapporo ⇄ A 28 Asahikawa
Travel time : approx. 1hr.25min.



特急ライラック All seats reserved
Ltd.Exp.Lilac

01 Sapporo ⇄ A 28 Asahikawa
Travel time : approx. 1hr.25min.



S 15 Otaru Canal

- Early to mid Feb / Otaru Snow Light Path
- Early Oct to early Nov / Autumn leaves
- From JR Otaru Station: 10 min walk



S 25 Niseko

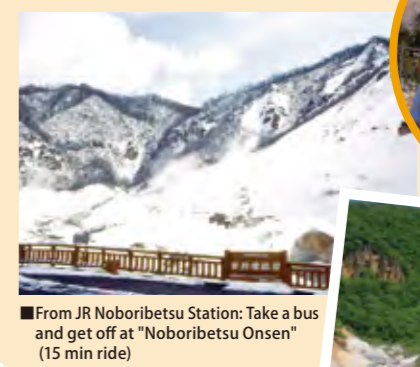
- Late Nov to early May / Skiing
- Bus from JR Kutchan Station (Travel time differs depending on ski resort.)

H 23 National Ainu Museum and Park "UPOPOY"



■ From JR Shiraoi Station: 10 min walk

H 28 Noboribetsu Hot Springs

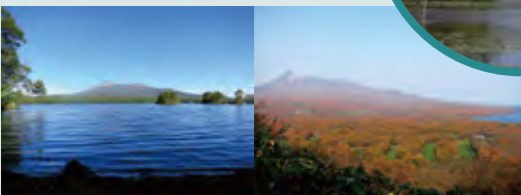


■ From JR Noboribetsu Station: Take a bus and get off at "Noboribetsu Onsen" (15 min ride)



H 67 Onuma Quasi-National Park

- Mid Oct to early Nov / Autumn leaves
- From JR Onumakoen Station: 1 min walk



H 74 H 75 Goryokaku Park (Hakodate)



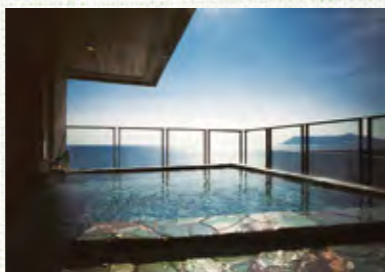
- Late April to mid May / Cherry blossoms
- Mid Oct to mid Nov / Autumn leaves
- From JR Hakodate Station: Take a streetcar and get off at "Goryokaku koen mae" (16 min ride and 18 min walk)
- From JR Goryokaku Station: Take a bus and get off at "Goryokaku koen iriguchi" (15 min ride and 10 min walk)



Matsumae Park (Matsumae)

- Late April to early May / Cherry blossom
- From JR Kikonai Station: Take a bus and get off at "Matsushiro" (1hr 30min ride and 7 min walk)

H 75 Yunokawa Hot Springs



- From JR Hakodate Station: Take a bus and get off at "Yunokawa Onsen" (25 min ride)
- Take a streetcar and get off at "Yunokawa Onsen" (30 min ride)



特急すずらん All seats reserved
Ltd.Exp.Suzuran

01 Sapporo ⇄ H 28 Noboribetsu ⇄ M 36 Muroran
Travel time : approx. 1hr.45min.



特急北斗 All seats reserved
Ltd.Exp.Hokuto

01 Sapporo ⇄ H 75 Hakodate
Travel time : approx. 3hr.50min.



H 75 Hakodate Morning Market

■ From JR Hakodate Station: 1 min walk



H 75 Mt. Hakodate Observatory



- All year round / Night view
- From JR Hakodate Station: Take a streetcar and get off at "Jujigai" (5 min ride), and 7 min walk to the mountain base station



H 75 In front of Red Brick Warehouses



- Dec 1-25 / Hakodate Christmas Fantasy
- From JR Hakodate Station: Take a streetcar and get off at "Jujigai" (5 min ride and 5 min walk)
- Take a bus and get off at "Meijikan-mae" (8 min ride and 2 min walk)

Southern Hokkaido

Hakodate
Matsumae
Onuma



*Only major stations are on the map.
*Travel time is an approximate time. The information on the events and the season for flowers, autumn leaves and drift ice may change depending on the conditions and weather. Please use them as a guide.
*The information is current as of April 2026. Please note that the contents are subject to change.
*The pictures shown are for illustration purpose only.

Northern Hokkaido

Asahikawa
Biei
Furano
Wakkanai

Wakkanai



● June-August / Flower season
■ From JR Wakkanai Station: Take a ferry to Oshidomari Port (15 min walk and 1hr 40min ride)

Asahiyama Zoo



● All year round (except closed season)
■ From JR Asahikawa Station: Take a bus and get off at "Asahiyama Dobutsuen" (40 min ride)

Farm Tomita (Naka-Furano)



● Early to late July / Lavender
■ From JR Lavender Farm Station: 7 min walk
■ From JR Naka-Furano Station: 25 min walk

Cape Soya (Wakkanai)

■ From JR Wakkanai Station: Take a bus and get off at "Soya Misaki" (50 min ride)



Rebun Island



● June-August / Flower season
■ From JR Wakkanai Station: Take a ferry to Kafuka Port (15 min walk and 1hr 55min ride)

Rishiri Island



● June-August / Flower season
■ From JR Wakkanai Station: Take a ferry to Oshidomari Port (15 min walk and 1hr 40min ride)

Asahidake Hot Springs



● Mid Sep to early Oct / Autumn leaves
■ From JR Asahikawa Station: Take a bus and get off at "Asahidake" (1hr 50min ride)

Blue Pond (Biei)



■ From JR Biei Station: Take a bus and get off at "Shirogane Aoi-ike Iriguchi" (20 min ride and 5 min walk)

Sounkyo Hot Springs

● Early Sep to late Oct / Autumn leaves
■ From JR Kamikawa Station: Take a bus and get off at "Sounkyo" (30 min ride)



Ltd.Exp.Kamui

All seats reserved
01 Sapporo ⇄ Asahikawa
Travel time: approx. 1hr.25min.

Ltd.Exp.Lilac

All seats reserved
01 Sapporo ⇄ Asahikawa
Travel time: approx. 1hr.25min.

Tokachigawa Hot Springs

● Late Jan to late Feb / Sairinka
■ From JR Obihiro Station: Take a bus and get off at "Garden Spa Tokachigawa Onsen" (30 min ride and 10 min walk)



*Only major stations are on the map. *Travel time is an approximate time. The information on the events and the season for flowers, autumn leaves and drift ice may change depending on the conditions and weather. Please use them as a guide. *The information is current as of April 2026. Please note that the contents are subject to change. *The pictures shown are for illustration purpose only.



Special Rapid Taisetsu

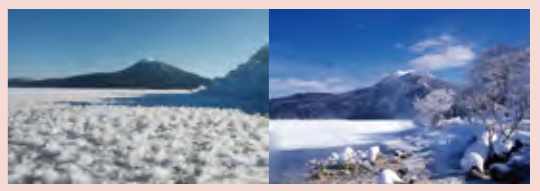
Asahikawa ⇄ Abashiri
Travel time: approx. 3hr.50min.

Ltd.Exp.Okhotsk

All seats reserved
01 Sapporo ⇄ Abashiri
Travel time: approx. 5hr.25min.

Akanko Hot Springs

● Early Feb to early March / Lake Akan Ice Festival (Venue: Lake Akan, 8 min walk from bus stop)
■ From JR Kushiro Station: Take a bus and get off at "Akanko Onsen" (2 hrs ride)



Ltd.Exp.Ozora

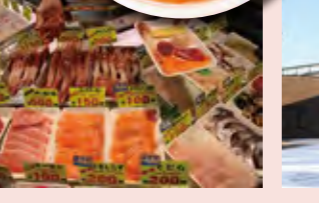
All seats reserved
01 Sapporo ⇄ Kushiro
Travel time: approx. 4hr.10min.

Ltd.Exp.Tokachi

All seats reserved
01 Sapporo ⇄ Obihiro
Travel time: approx. 2hr.40min.

Kushiro

● Kushiro Washo Market
■ From JR Kushiro Station: 5 min walk
● All year round / Akan International Crane Center Grus
● Nov-early March / Japanese Crane Observation Center
■ From JR Kushiro Station: Take a bus and get off at "Tancho-no-Sato" (1hr ride)



Eastern Hokkaido

Shiretoko
Abashiri
Kushiro
Obihiro

