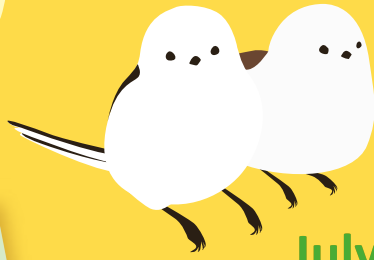


Travel around Hokkaido with snow fairy birds!



July 1-September 30, 2025 *Limited quantity



You can get a
ticket case
if you exchange
or purchase
a rail pass!

Applicable passes *One ticket case per pass

Hokkaido Rail Pass, Sapporo-Noboribetsu Area Pass,
Sapporo-Furano Area Pass, JR East-South Hokkaido
Rail Pass, JR Tohoku-South Hokkaido Rail Pass,
Japan Rail Pass

Stations

New Chitose Airport,
Sapporo, Noboribetsu,
Asahikawa, Obihiro, Kushiro,
Abashiri, Hakodate
Shin-Hakodate-Hokuto

How to use

Put a rail pass
on the left side!



Put reserved
seat tickets
on the right side!

Stations with automatic ticket gates

Take out only a rail pass and
insert it into the automatic gate.



YES Rail Pass

NO Reserved seat ticket

Please insert only your rail pass.
*Do not insert reserved seat tickets.
Pick up your rail pass after passing through the gate.
*The rail pass cannot be reissued even if it is lost or stolen etc.

Stations without automatic ticket gates

Put a rail pass on the left side and a reserved seat
ticket for your limited express train on the right side
of the ticket case and show it to the staff.



There is a magnet inside tickets.
Please do not fold or place them
near smartphones etc.

Enjoy Hokkaido
with snow fairy birds!

