

February 4, 2026

Notice of Locomotive Change for the “SL Fuyu-no-Shitsugen Train”

Regarding the steam locomotive (C11-171) currently used for the “SL Fuyu-no-Shitsugen Train”, three incidents occurred during operation on January 31 in which the locomotive was temporarily unable to start when departing from stations. On February 1, as a precaution in case the steam locomotive did not generate sufficient power, the service was operated with a diesel locomotive coupled in addition to the steam locomotive. Following a detailed inspection conducted on February 2, it was confirmed that a piston component (piston ring) in the steam chamber—responsible for converting steam into motive power—had fractured. This damage caused steam leakage, resulting in insufficient power for starting.

While we are continuing to investigate the detailed cause, repairs are expected to require a significant amount of time. Therefore, the locomotive for the “SL Fuyu-no-Shitsugen Train” will be changed to a diesel locomotive.

We sincerely apologize to our customers who were looking forward to traveling behind a steam locomotive, as well as to residents along the railway line, for any inconvenience this may cause.

1. Details of the Change

The steam locomotive (C11-171) used for the “SL Fuyu-no-Shitsugen Train” will be changed to a diesel locomotive.

2. Dates Operated by Diesel Locomotive

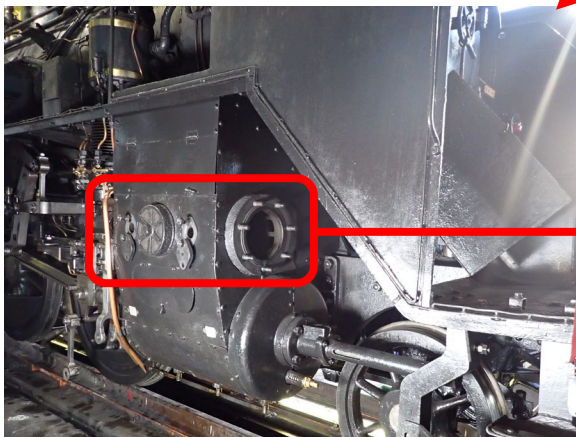
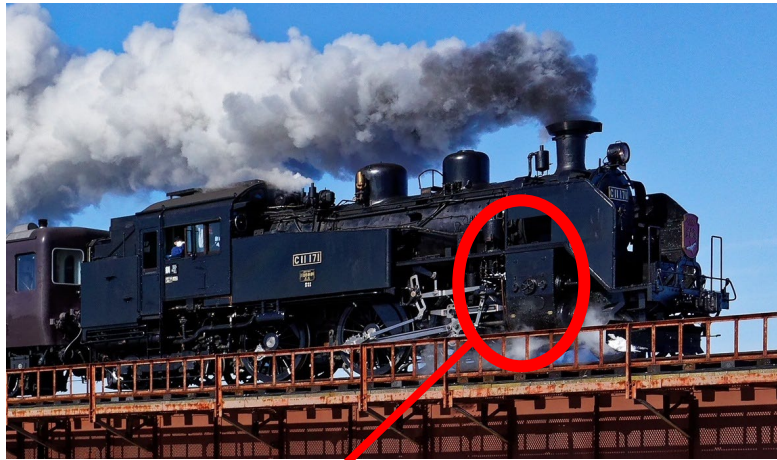
February 5, 6, 7, 8, 2026

*The locomotive to be used from the next scheduled operating day (February 11) onward has not yet been decided. If the service continues to be operated with a diesel locomotive, further information will be announced separately.

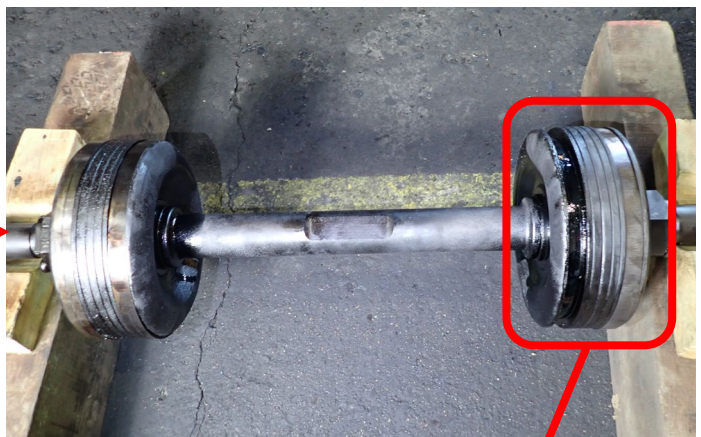
3. Other Information

- Reserved seat tickets are available at the JR Ticket Counters and reserved seat ticket vending machines.
- There will be no changes to the operating section, timetable, seat position, or onboard services, including onboard sales and the distribution of memorial ride certificates.

【Condition of the piston ring on the steam locomotive (C11-171)】



**Exterior of the steam chamber
(after removal of the piston)**



Steam chamber piston



For reference: Normal piston ring



**Damaged piston ring
(area outlined in yellow)**