

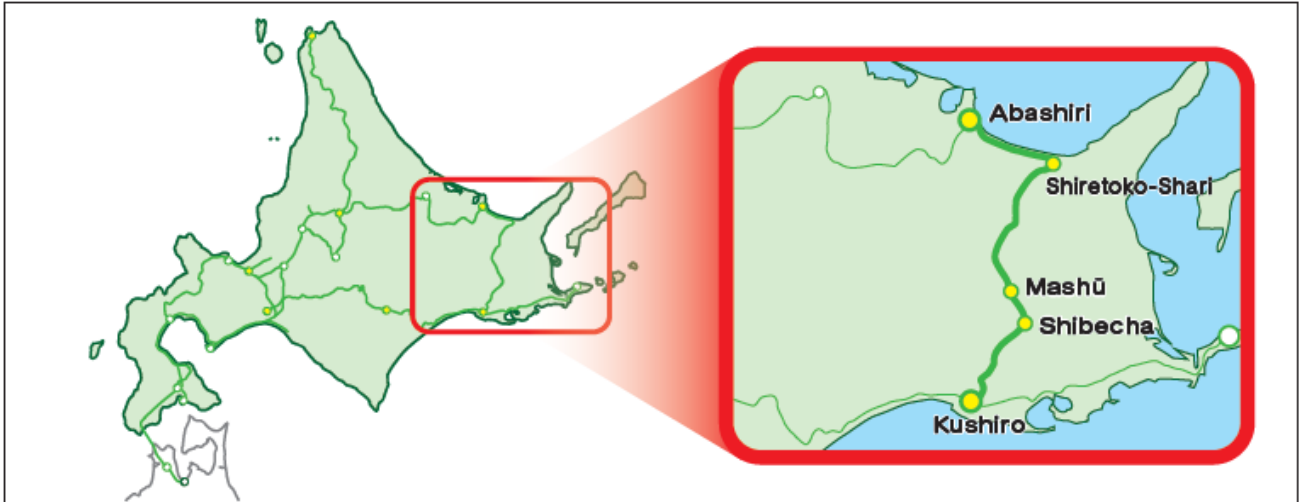
## Senmo Line Basic Fare E-ticket

Good news for Senmo Line travelers! You can now purchase certain tickets as e-tickets.

Complete your purchase right on your smartphone—no need to wait in line at the ticket counter or deal with ticket machines. Take advantage of this convenient option!

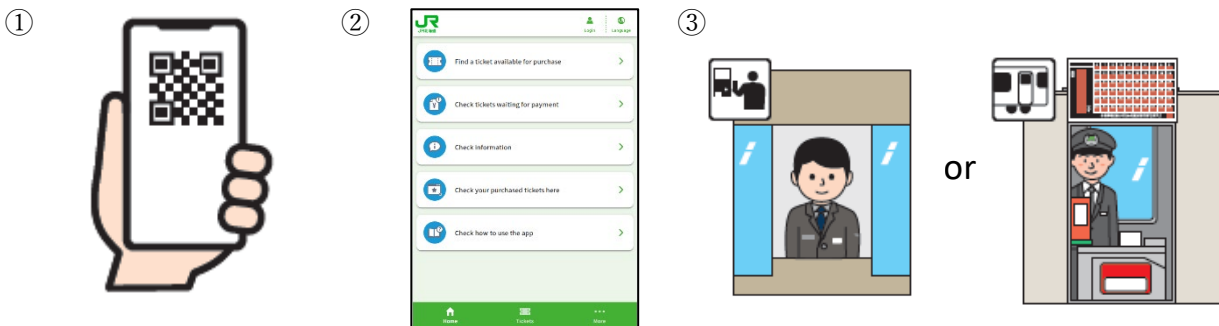
- Applicable Sections:

“Shiretoko-Shari Station, Mashu Station, or Shibeche Station” ⇒ “Any station between Kushiro and Abashiri”



- How to Use:

- ① Scan the QR code at Shiretoko-Shari, Mashu, or Shibeche stations
- ② Access the website and purchase your e-ticket  
\*You need to register your credit card and other information.
- ③ When boarding or exiting the train, show your e-ticket to the staff at the gate or on the train.  
\*At Kushiro Station, please scan your e-ticket at the QR code ticket gate yourself.



(Notes)

- You can purchase e-tickets for multiple passengers in one transaction.
- Valid only on the day of purchase, for one-way travel, no stopovers allowed.
- Refunds are available only before use. A handling fee of 220 yen will be charged if more than 30 minutes have passed since purchase.
- If you wish to use a reserved seat, a separate “reserved seat ticket” is required.