

Hokkaido Travel Etiquette

Now that you've got a ticket, it's time to board a train and set off on your journey!
Please be sure to behave in a manner that will allow you and all other passengers to have a comfortable trip.
You can purchase items such as boxed lunches and eat them on the train.

On the platform

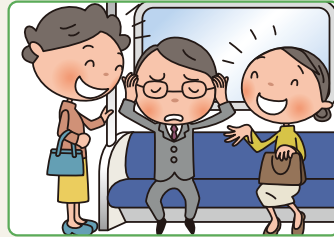


Please step back from the tracks and line up double file inside the white line.

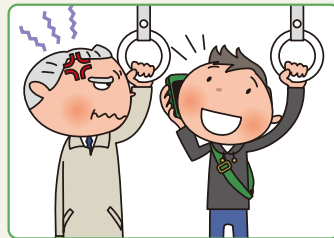


When taking photographs, please be careful and take them from inside the white line.

Some passengers prefer to rest on the train



Please be careful when talking that the volume of your voice does not disturb other passengers.



Please set your mobile phone to manner mode while on board and refrain from making calls on Local or Rapid trains. When making calls on Limited Express or Express trains, please use the deck.

Trains may become full during the tourist season. Please cooperate so that as many people as possible can have a seat.



Please place your luggage on the rack or in your lap.

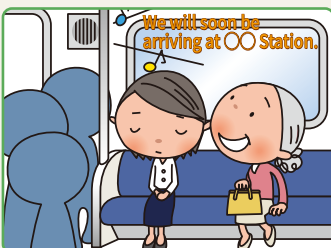


Please use 4-seater box seats with four people.



Passengers with a reserved seat ticket may only use the seat designated on their ticket.

In order to get on and off the train smoothly...



Please be ready to exit the train in advance before arriving at your destination as trains only stop for a brief time. (Onboard announcements are made before stopping at each station.)



Please refrain from passing through the reserved seat car to reach the unreserved car when boarding.

We hope you'll have a nice trip in Hokkaido!